

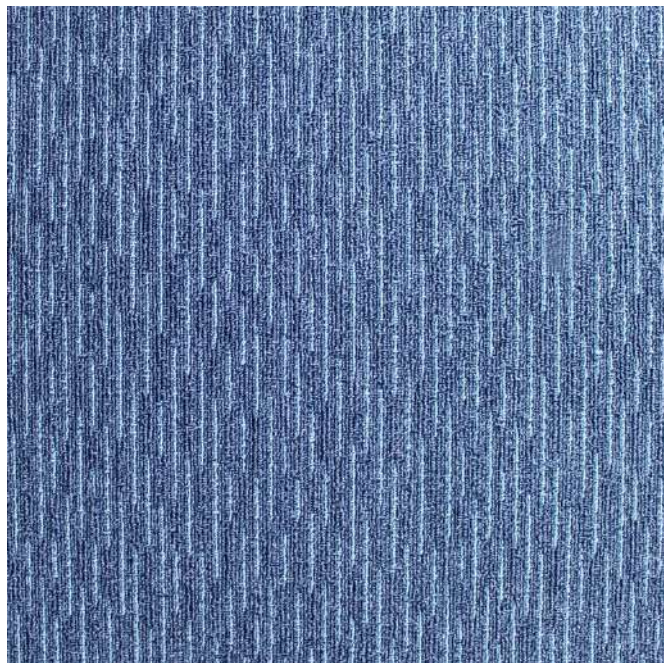


OXFORD

MA**MA**[®]

CARPET TILES

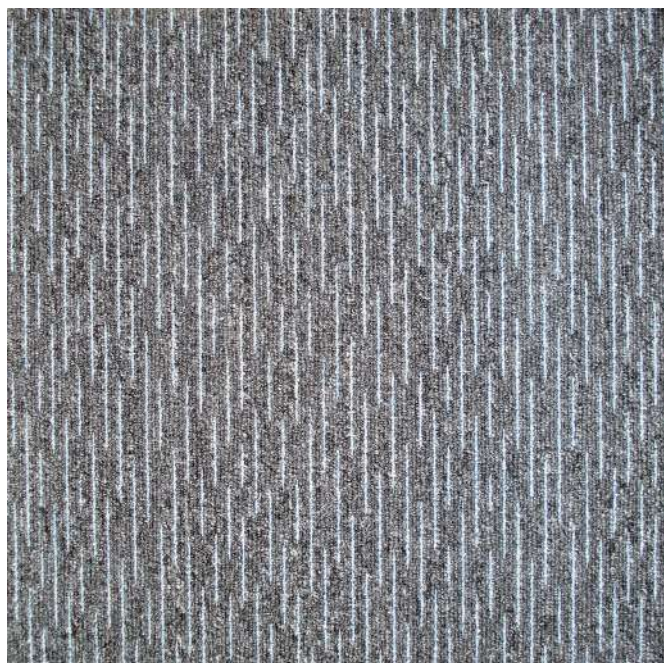
OXFORD



OXFORD 9555 DEEP SEA



OXFORD 9773 SIGNATURE



OXFORD 9774 SILVER GREY



OXFORD 9794 WILLET

OXFORD CARPET TILES

| | | |
|--------------------------|---|--|
| Style | : | OXFORD |
| Pile Fiber Composition | : | 100% Olefin (Polypropylene) |
| Yarn Type | : | BCF |
| Dye Method | : | Solution Dyed |
| Construction | : | Loop Pile |
| Total Thickness | : | 7.5 mm |
| Pile Thickness | : | 3.00 mm /4.50 mm |
| Pile Weight | : | 725 g/m ² |
| Number of Tufts | : | 181700 / m ² |
| Tufting Gauge | : | 1/10" |
| Primary Backing | : | Non-Woven |
| Backing Structure | : | Stable Shield 100% Vinyl |
| Pile Treatment | : | INVISTA Anti - Soil treatment, Anti-Microbial (Optional) |
| Tile Size | : | 50 cmx50cm |
| Package | : | 20 pcs per box (5m ²) |
| Recommended Installation | : | Brick or Quarter Turn |

| | | |
|-------------------------|----------------------------------|------------------------------|
| Voc Emmission | ASTM D5116-06 | <0.5 mg/m ² /hour |
| Flammability | ASTM D-2859//FF 1-70//16CFR 1630 | Pass 8/8 |
| Reaction To Fire | EN ISO 9239-1:2002 | Dfl-s1 |
| Static Propensity | ISO 6356 | 0.2 kV |
| Colour Fastness | AATCC/16 | 5/5 on Grey Scale |
| Thermal Resistance | ISO 8302 | 0.04m ² K/W |
| Impact Sound Insulation | ISO 140-8 | ΔLw 23dB |
| Sound Absorption Level | EN ISO 11654 | αw: 0.15(H) |
| Soiling Propensity | ASTM D 6540-00 | 4 |
| Dimensional Stability | EN 986 | < 0.20% |
| Castor Chair Test | DIN 54324 | R ≥ 2.4 |