

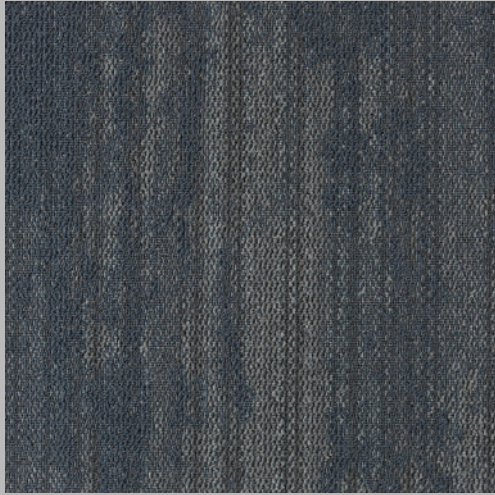


Hard Graft

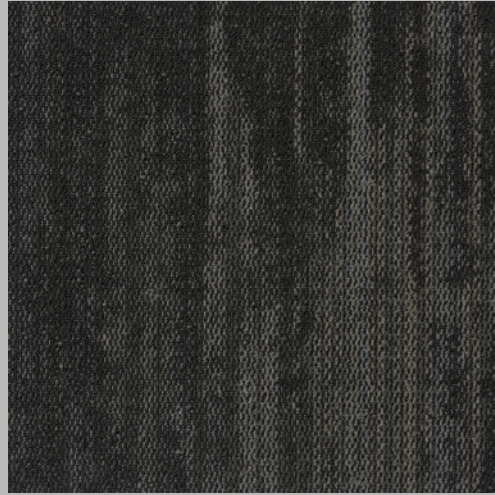
Specifications



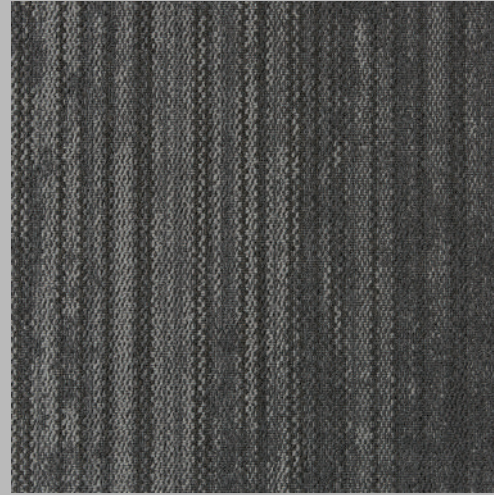
Construction	Tufted Multi Scroll Loop Pile.
Product Description	General / Medium Commercial Polypropylene Tufted Loop Pile Bitumen Tile
Yarn Type	Stainproof Miracle Fibre (Polypropylene)
Recycled Content	Backing (NexBac Eco / EcoBac on request only)
Use Classification	General / Medium Commercial
Pile Height	2.5 mm to 5.5 mm (± 0.5 mm)
Total Thickness	± 7 mm
Total Mass	± 4100 g/m ²
Standard Size	50 cm x 50 cm
Machine Gauge	1/10"
Stitches	39
Packing	20 Tiles (5 M ²) In a Box
Fire Index	2 (SANS 10177-IV)
Colour Fastness to	Light : 7 (ISO 105-B02) Rubbing : (a) Wet 4-5 (ISO 105-X12) Rubbing : (b) Dry 4-5 (ISO 105-X12) Water : 4-5 (ISO 105-E01)
Electrostatic Propensity	Less than 2.0 kV (EN 1307)
Static Control	Permanent
VOC Tested	Pass



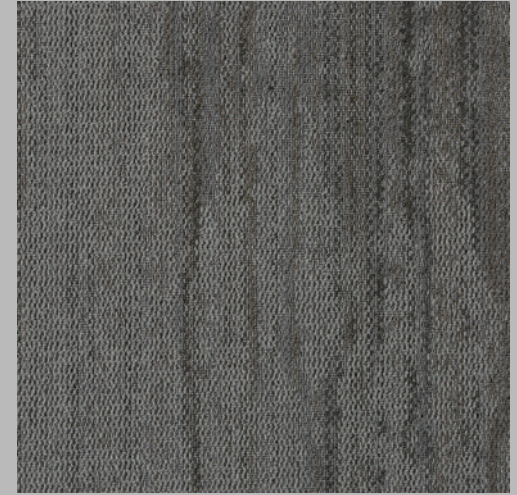
Hard Graft - Shaded: Chill 301



Hard Graft - Shaded: Deep 302



Hard Graft - Shaded: Edge 303



Hard Graft - Shaded: Hype 304



Staircase Suitable



Underfloor Heating



Medium/General Commercial



Heavy Commercial



Eco-Friendly



Institution



Hospitality



Modular



Product characteristics may vary due to the nature of manufacture. To combat colour variance do not install more than one dye lot in a single installation. A join line will be visible on plank and tile products due to the format of the design repeat - if you would not like a visible join, alternate the direction of the installation to your desired aesthetic. Sample swatches have been cut from an overall design; therefore, the decoration and shades may vary. A difference in appearance from the pattern is likely, as the product is not intended to have a uniform appearance