

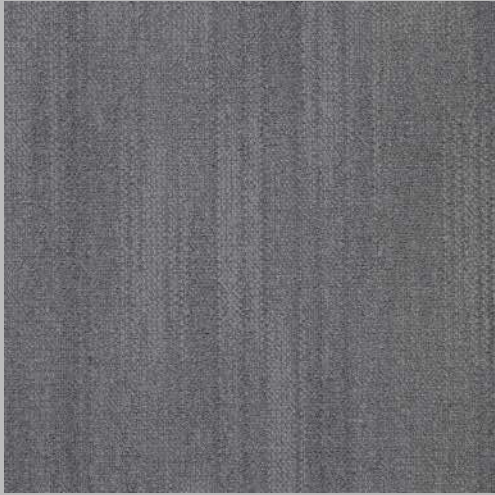


Shift

Specifications



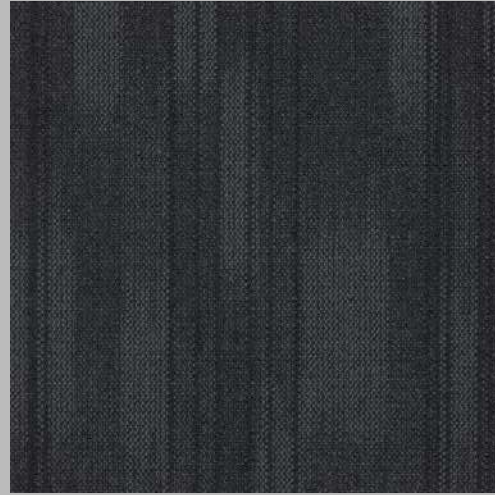
Use Classification	Heavy Commercial - 33 (EN 1307)
Construction	Tufted Multi Scroll Loop Pile
Product Description	Heavy Commercial SDN Tufted Loop Pile Bitumen Tile - SS
Yarn Type	Stainproof SDX (Solution Dyed Nylon - 6)
Pile Height	± 2 - 3.5 mm
Total Thickness (NexBac SX)	± 5 mm
Total Mass (NexBac SX)	± 3500 g/m ² **
Standard Tile Size	50 x 50 cm***
Standard Backing Type	NexBac SX
Machine Gauge	1/10"
Stitches / 10 cm	60 (±1)
Packing	24 Tiles (6 M ²) in a Box
Fire Classification	2 (SANS 10177-4) Bfl-s1 (EN 13501) Class 1 (ASTM E 648-08)
Colour Fastness To:	
i) Light	8 (AATCC 16/ISO 105 B02)
ii) Rubbing (Change of Colour)	4/5 (AATCC 165/ISO 105 X 12)
iii) Rubbing (Staining)	5 (AATCC 165/ISO 105 X 12)
Electrostatic Propensity	≤ 2kV (ISO 6356/EN 1307)
Static Control	Permanent
Sound Absorption (NexBac SX)	aw 0.15 (EN ISO 354:2003)
Sound Insulation (NexBac SX)	ΔLw = 18dB (ISO 717-2)
Thermal Resistance (NexBac SX)	0.0638m ² .K/W (ISO 8302)
VOC Tested	Pass (GBCSA/GBCA)
Castor Chair Suitability	A: Intense Use (NF EN 985)
Guarantee	5 Years
Limited Wear Warranty	15 Years



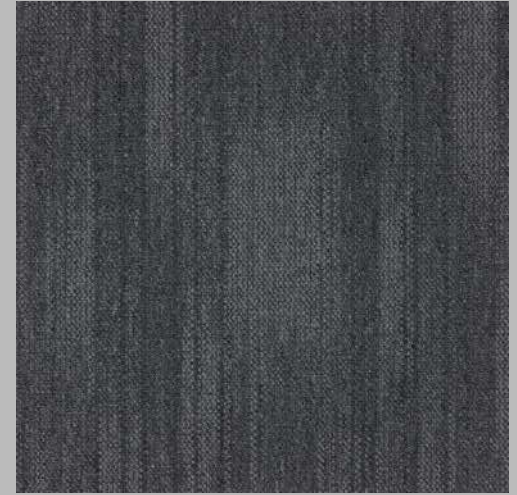
Shift - Calm 101



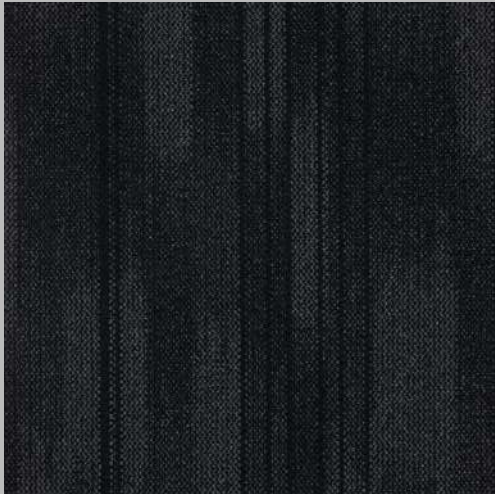
Shift - Comfort 102



Shift - Grounded 103



Shift - Solid 104



Shift - Strength 105



Staircase Suitable



Underfloor Heating



Medium/General Commercial



Heavy Commercial



Eco-Friendly



Institution



Hospitality



Modular



Product characteristics may vary due to the nature of manufacture. To combat colour variance do not install more than one dye lot in a single installation. A join line will be visible on plank and tile products due to the format of the design repeat - if you would not like a visible join, alternate the direction of the installation to your desired aesthetic. Sample swatches have been cut from an overall design; therefore, the decoration and shades may vary. A difference in appearance from the pattern is likely, as the product is not intended to have a uniform appearance