

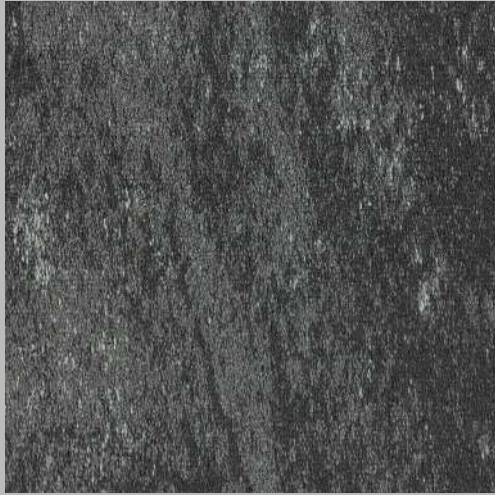


# Cracked Cement



## Specifications

Construction	Pattern Colour Placement
Yarn Type	Stainproof SDX (Solution Dyed Nylon)
Use Classification	Heavy Commercial
Pile Height	2 mm (±0.5 mm)
Total Thickness	6 mm (±0.5 mm)
Backing	NexBac
Standard Sizing Available	50 x 50 cm
Machine Gauge	1/10"
Stitches/10cm	50
Total Mass	± 3900 g/m <sup>2</sup>
Packing	20 Tiles (5 M <sup>2</sup> ) In a Box
Fire Index	Bfl - S1 (EN 13501) Class 1 (ASTM E648-08)
Colour Fastness To:	
i) Light	7 (ISO 105 - B02)
ii) Rubbing	(a) Wet 4 - 5 (ISO 105-X12)
	(b) Dry 4 - 5 (ISO 105-X12)
iii) Water	4 - 5 (ISO 105 - E01)
Electrostatic Propensity	Less Than 2.0 kV (ISO 6356/EN 1307)
Static Control	Permanent
Sound Absorption	aw 0.15
VOC Tested	Pass
Recycled Content	Backing – NexBac Eco (available on request only) Pile Yarn (Certain Colours only)



Cracked Cement - Fossil 401

Cracked Cement - Cool Grey 403

Cracked Cement - Winter Grey 402

Cracked Cement - Char Green 404



Staircase Suitable



Underfloor Heating



Medium/General Commercial



Heavy Commercial



Eco-Friendly



Institution



Hospitality



Modular



Product characteristics may vary due to the nature of manufacture. To combat colour variance do not install more than one dye lot in a single installation. A join line will be visible on plank and tile products due to the format of the design repeat - if you would not like a visible join, alternate the direction of the installation to your desired aesthetic. Sample swatches have been cut from an overall design; therefore, the decoration and shades may vary. A difference in appearance from the pattern is likely, as the product is not intended to have a uniform appearance