



Grid

Specifications



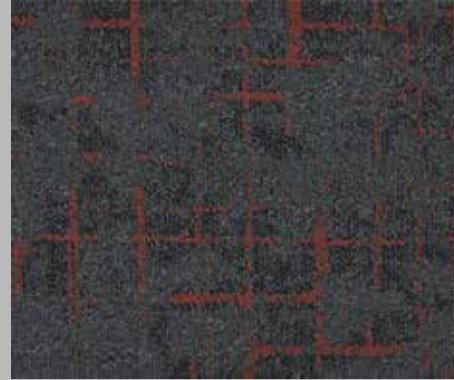
Construction	Tufted Pattern Colour Placement Loop Pile
Yarn Type	Stainproof SDX (Solution Dyed Nylon)
Use Classification	Heavy Commercial
Pile Height	4 mm (± 0.5 mm)
Total Thickness	5 mm (± 0.5 mm)
Backing	NexBac Only
Standard Sizing Available	50 x 50 cm
Machine Gauge	1/10"
Stitches/10cm	50
Total Mass	± 3900 g/m ²
Packing	20 Tiles (5 M ²) In a Box
Fire Classification	2 (SANS 10177-4), Bfl - s1 (EN 13501), Class 1 (ASTM E648-08)
Colour Fastness To:	
i) Light	8 (AATCC16 / ISO 105 - B02)
ii) Rubbing (change of colour)	4/5 (AATCC 165/ISO 105 X 12)
iii) Rubbing (staining)	5 (AATCC 165/ISO 105 X 12)
Electrostatic Propensity	≤ 2 kV (ISO 6356/EN 1307)
Static Control	Permanent
Sound Absorption	aw 0.15 (EN ISO 354:2003)
Sound Insulation	Δ Lw 18 dB (ISO 717-2)
Thermal Resistance	0.0638 m ² .K/W (ISO 8302)
Dimensional Stability	Pass (NF EN 986)
VOC Tested	Pass (GBCSA/GBCA)
Castor Chair Suitability	A: Intense Use (NF EN 985)
Recycled Content	Yarn – Stainproof SDX Eco - Certain Colours Backing – EcoBac 300 (S3) & EcoBac 500 (S5)



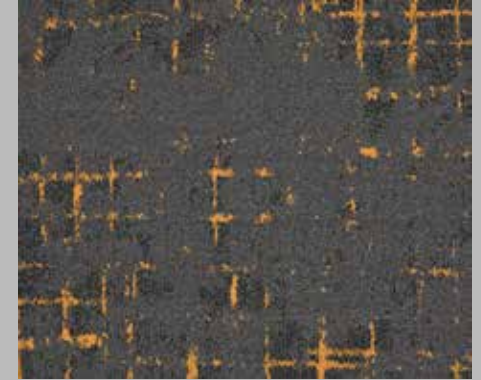
GRID - 202 HORIZON



GRID - 204 SUNRISE



GRID - 205 SUNSET



GRID - 207 VESPER



GRID - 201 CLOUD BREAK



GRID - 206 THUNDER



GRID - 208 DRYLAND



GRID - 209 HEADLAND



Staircase Suitable



Underfloor Heating



Medium/General Commercial



Heavy Commercial



Eco-Friendly



Institution



Hospitality



Modular



Product characteristics may vary due to the nature of manufacture. To combat colour variance do not install more than one dye lot in a single installation. A join line will be visible on plank and tile products due to the format of the design repeat - if you would not like a visible join, alternate the direction of the installation to your desired aesthetic. Sample swatches have been cut from an overall design; therefore, the decoration and shades may vary. A difference in appearance from the pattern is likely, as the product is not intended to have a uniform appearance

