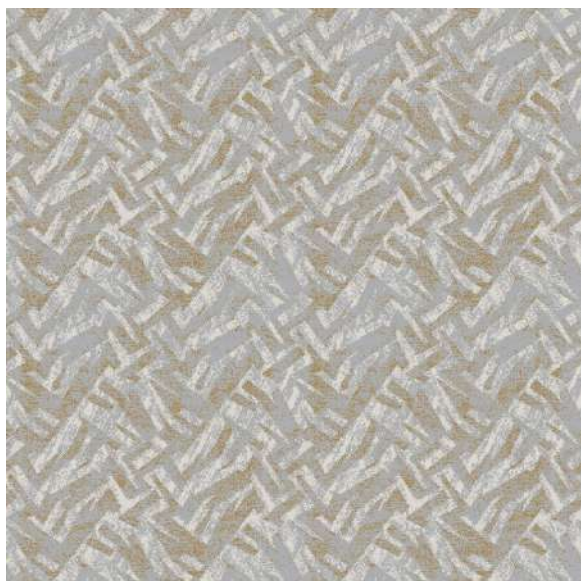




CORAL

CORAL



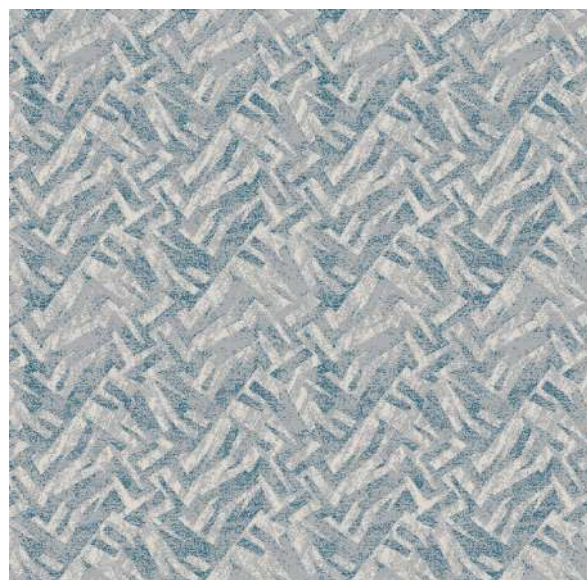
CL 527 - KYOTO



CL 531 - TOKYO



CL 537 - OSAKA



CL 5411 - KOBE



CL 585 - YOKOHAMA

CORAL BROADLOOM CARPETS

SPECIFICATIONS

PRODUCT NAME	:	CORAL
CONSTRUCTION	:	WOVEN WILTON
PILE YARN	:	100% POLYPROPYLENE HEAT SET
WEAVE STRUCTURE	:	DOUBLE SHOT
POINTS/SQM	:	485100
YARN COUNT	:	2000 D' TEX
PILE WEIGHT (GSM)	:	+/- 1779 G/M2
TOTAL CARPET WEIGHT (GSM)	:	+/- 2454 G/M2
PILE HEIGHT	:	+/- 10.0 MM
TOTAL HEIGHT	:	+/- 12.0 MM
ROLL SIZE	:	4 M X 25 LM
REED PER MTR	:	315
BACKING	:	JUITE & POLY COTTON
FLAMMABILITY	:	HOT METAL NUT TEST (BS 4790)

- Shading or Pile reversal is an inherent attribute of cut pile carpets and it is not a manufacturing defect.
- Colour may slightly vary from one dye lot to another dye lot.
- Total weight of the product can have a normal variation of $\pm 5\%$.
- We reserve the right to amend the above specification without prior notice with changes in raw material supplies.



ENP514

